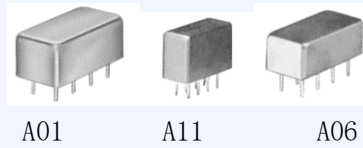


电平 17 频率 (0.003-3000) MHz

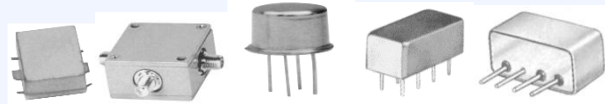


电平 17 (LO=+17dBm, RF 可至+10dBm)

适用于 (+15~+23) dBm, 1dB 压缩电平 \geq +10dBm

型号	频率范围 (MHz)		变频损耗 (dB)			LO - RF 隔离度 (dB)						LO - IF 隔离度 (dB)						外形 封装	引脚 连接
	LO / RF	IF	全频段			L		M		H		L		M		H			
	$F_L - F_H$		Typ	Max	Max	Typ	Min	Typ	Min	Typ	Min	Typ	Min	Typ	Min	Typ	Min		
VRH1H	1-500	DC-500	6.0	7.0	8.5	50	45	45	30	35	25	45	35	40	25	30	20	A01	a
VRH2H	1-1000	DC-1000	6.0	7.0	8.5	60	50	35	30	30	25	50	45	30	25	25	20	A01	a
VRH3H	0.025-200	DC-200	6.0	7.0	8.5	60	50	45	35	35	25	45	35	40	30	30	20	A01	a
VRH5H	200-3000	DC-1000	9.0	9.5	11	30	17	30	17	30	17	20	10	20	10	20	10	A01	a
VRH6H	0.003-100	DC-100	6.0	7.5	8.5	60	50	45	30	35	25	60	45	40	25	30	20	A01	a
VRH8H	5-1500	DC-1500	6.0	7.5	9.0	45	35	35	30	30	25	40	25	30	25	25	20	A01	a
VRH9H	10-2000	10-600	8.0	8.5	10.0	35	25	20				35	25	20				A01	a
VRH15H	0.01-100	DC-100	7.0	7.5	9.0	60	40	40	35	35	25	50	40	35	30	30	25	A01	a
VRH22H	0.05-2000	0.05-2000	8.0	8.5	11.0	22	20	32	30	25	20	25	20	35	30	20	18	A01	a
VRH25H	10-3000	10-2500	7.5	8.0	8.5	20	25	20				20	20	20				A01	a
VRH101H	1-500	DC-500	6.0	7.0	8.5	50	45	45	30	35	25	45	35	40	25	30	20	A06	a
VRH102H	1-1000	DC-1000	6.0	7.0	8.5	60	50	35	30	30	25	50	45	30	25	25	20	A06	a
VRH105H	200-3000	DC-1000	9.0	9.5	11	30	17	30	17	30	17	20	10	20	10	20	10	A06	a
VRH106H	0.003-100	DC-100	6.0	7.5	8.5	60	50	45	30	35	25	60	45	40	25	30	20	A06	a
VRH108H	5-1500	DC-1500	6.0	7.5	9.0	45	35	35	30	30	25	40	25	30	25	25	20	A06	a
VRH109H	10-2000	10-600	8.0	8.5	10.0	35	25	20				35	25	20				A06	a
VRH125H	10-3000	10-2500	7.5	8.0	8.5	20	25	20				20	20	20				A06	a
VRH201H	1-500	DC-500	6.0	7.0	8.5	50	45	45	30	35	25	45	35	40	25	30	20	A11	a
VRH202H	1-1000	DC-1000	6.0	7.0	8.5	60	50	35	30	30	25	50	45	30	25	25	20	A11	a
VRH205H	200-3000	DC-1000	9.0	9.5	11	30	17	30	17	30	17	20	10	20	10	20	10	A11	a
VRH208H	5-1500	DC-1500	6.0	7.5	9.0	45	35	35	30	30	25	40	25	30	25	25	20	A11	a
VRH209H	10-2000	10-600	8.0	8.5	10.0	35	25	20				35	25	20				A11	a
VRH225H	10-3000	10-2500	7.5	8.0	8.5	20	25	20				20	20	20				A11	a

L 低段 ($f_L - 10f_L$) M 中段 ($10f_L - f_H/2$) H 高段 ($f_H/2 - f_H$) m 中段 ($2f_L - f_H/2$)



BB02 K1 PC A06 B02

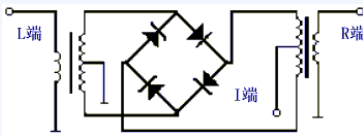
电平 17 (LO=+17dBm, RF 可至+10dBm)

适用于 (+15~+23) dBm, 1dB 压缩电平 \geq +10dBm

型号	频率范围 (MHz)		变频损耗 (dB)			LO - RF 隔离度 (dB)						LO - IF 隔离度 (dB)						外形封装	引脚连接						
	LO / RF	IF	m		全频段	L			M			H			L					M			H		
	$f_L - f_H$		Typ	Max	Max	Typ	Min	Typ	Min	Typ	Min	Typ	Min	Typ	Min	Typ	Min			Typ	Min	Typ	Min	Typ	Min
VRH401H	1-500	DC-500	6.0	7.0	8.5	50	45	45	30	35	25	45	35	40	25	30	20	B02	b						
VRH402H	1-1000	DC-1000	6.0	7.0	8.5	60	50	35	30	30	25	50	45	30	25	25	20	B02	b						
VRH405H	200-3000	DC-1000	9.0	9.5	11	30	17	30	17	30	17	20	10	20	10	20	10	B02	b						
VRH408H	5-1500	DC-1500	6.0	7.5	9.0	45	35	35	30	30	25	40	25	30	25	25	20	B02	b						
VRH409H	10-2000	10-600	8.0	8.5	10.0	35	25	20				35	25	20				B02	b						
VRH425H	10-3000	10-2500	7.5	8.0	8.5	20	25	20				20	20	20				B02	b						
VRH701H	1-500	DC-500	6.0	7.0	8.5	50	45	45	30	35	25	45	35	40	25	30	20	BB02	d						
VRH702H	1-1000	DC-1000	6.0	7.0	8.5	60	50	35	30	30	25	50	45	30	25	25	20	BB02	d						
VRH705H	200-3000	DC-1000	9.0	9.5	11	30	17	30	17	30	17	20	10	20	10	20	10	BB02	d						
VRH708H	5-1500	DC-1500	6.0	7.5	9.0	45	35	35	30	30	25	40	25	30	25	25	20	BB02	d						
VRH709H	10-2000	10-600	8.0	8.5	10.0	35	25	20				35	25	20				BB02	d						
VRH725H	10-3000	10-2500	7.5	8.0	8.5	20	25	20				20	20	20				BB02	d						
VRH-1H	1-500	DC-500	6.0	7.0	8.5	50	45	45	30	35	25	45	35	40	25	30	20	A06	a						
VRH2HK1	1-1000	DC-1000	6.0	7.0	8.5	60	50	35	30	30	25	50	45	30	25	25	20	K1	s						
VRH7HP	1-800	DC-800	6.0	7.5	9.0	25	25	25				25	25	25				PC	j						

L 低段 ($f_L - 10f_L$) M 中段 ($10f_L - f_H/2$) H 高段 ($f_H/2 - f_H$) m 中段 ($2f_L - f_H/2$)

引脚连接及电原理图



接口	a	b	d	j	s
LO	8	4	4	3	LO
RF	1	1	3	1	RF
IF	3, 4*	2	2	2	IF
接地	2, 5, 6, 7	3	1	4	-
壳地	2, 5, 6, 7	3	-	4	-
不用	-	-	-	-	-

*引脚由外电路相连。