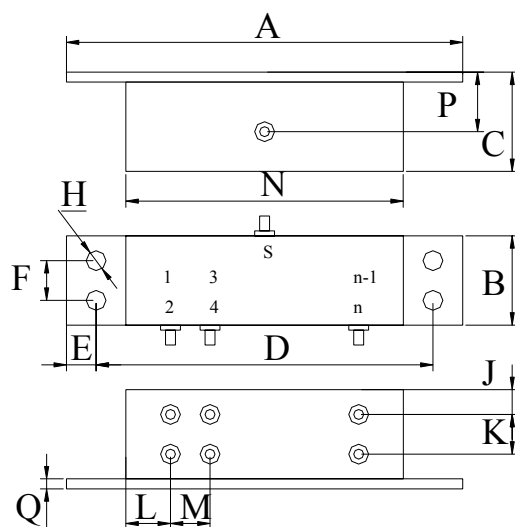


R 类外形产品引脚排列及外形尺寸(mm)



	A	B	C	D	E	F	G	H	J	K	L	M	N	P	Q
R08*	103.12	40.64	38.10	90.42	6.10	22.35	9.14	4.06	10.16	17.53	14.73	16.76	79.50	20.32	1.53
R08A*	89.16	40.64	34.04	76.96	6.10	22.35	9.14	4.06	10.16	12.70	13.72	12.70	65.54	17.80	1.53
R12*	169.93	40.64	38.10	157.99	6.10	22.35	9.14	4.06	10.16	17.53	30.99	16.76	145.29	20.57	1.53
R12A*	114.56	40.64	34.04	102.36	6.10	22.35	9.14	4.06	10.16	12.70	13.72	12.70	90.94	17.80	1.53
R16*	169.93	40.64	38.10	157.99	6.10	22.35	9.14	4.06	10.16	17.53	13.97	16.76	145.29	20.57	1.53
R16A*	139.96	40.64	34.04	127.76	6.10	22.35	9.14	4.06	10.16	12.70	13.72	12.70	116.34	17.80	1.53

*注： 该类产品是腔体型，不满足密封性要求。